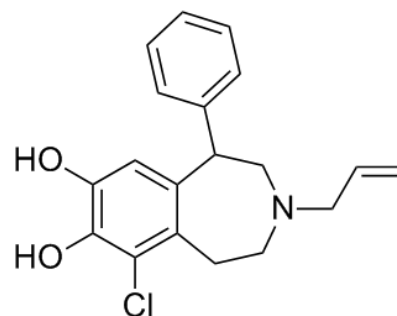


Product Name : SKF 82958
Cat. No. : PC-42583
CAS No. : 80751-65-1
Molecular Formula : C₁₉H₂₀ClNO₂
Molecular Weight : 329.8206
Target : Dopamine Receptor
Solubility : 10 mM in DMSO



Biological Activity

SKF 82958 is a potent, full **dopamine D1** agonist, produces characteristic anorectic effects, hyperactivity and self-administration in animals.

SKF 82958 also is a subtype-selective estrogen receptor-alpha (**ERalpha**) agonist.

References

- Pfeiffer FR, et al. J Med Chem. 1982 Apr;25(4):352-8.
Walters MR, et al. J Biol Chem. 2002 Jan 18;277(3):1669-79.
O'Boyle KM, et al. Neuropharmacology. 1989 Apr;28(4):401-5.
Steulet AF, et al. Eur J Pharmacol. 1990 Nov 20;191(1):19-27.

Caution: Product has not been fully validated for medical applications. Lab Use Only!

E-mail: tech@probechem.com